

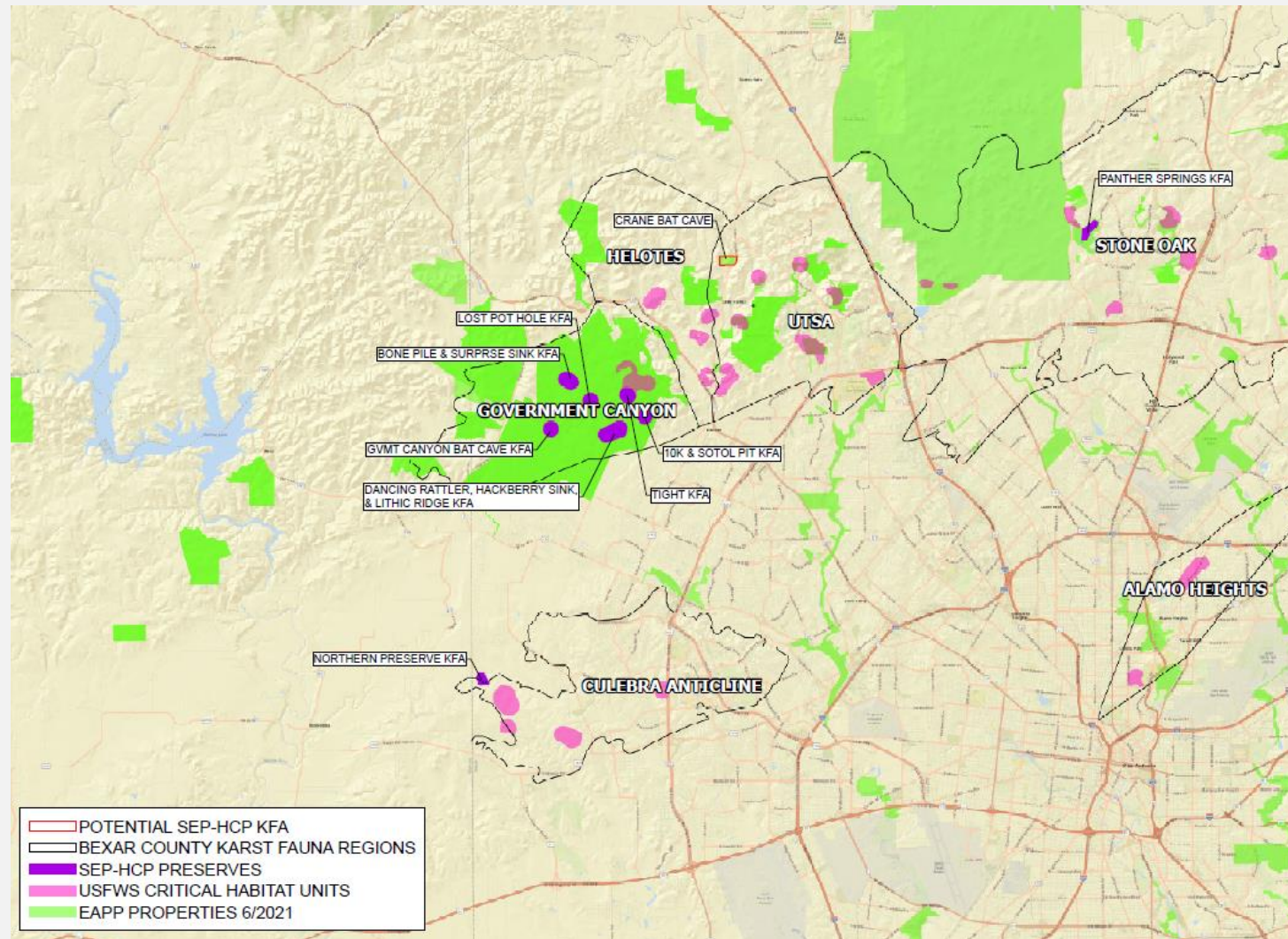
CRANE BAT CAVE

Logan Sparrow, Policy Administrator
Development Services Department

BACKGROUND

- The Southern Edwards Plateau Habitat Conservation Plan (SEP-HCP) is a voluntary program that provides an alternative method to achieve compliance with the Endangered Species Act
- Program assists with mitigation of covered species, including Golden Cheeked Warbler, Black Capped Vireo, and Karst species
- The SEP-HCP is looking for another preserve to establish as a Karst Fauna Area to generate additional Karst Enrollment Acres to mitigate the impact of future projects

LOCATION



PROPOSAL

- SEP-HCP is proposing to transfer the operations and management of the Crane Bat Cave Preserve from the Edwards Aquifer Protection Program (EAPP), administered by the Parks and Recreation Department, to the SEP-HCP
- The preserve was acquired by the EAPP in 2020 for a sum of \$2,059,144.18
- SEP-HCP is proposing to reimburse the full initial investment to EAPP
- The current ordinance requires revenue sharing (50/50) between SEP-HCP and EAPP for projects enrolling in SEP-HCP and utilizing Prop 1 property
- This alternative is more administratively efficient and results in substantially more finding for EAPP
- SEP-HCP will accept a conservation easement placed on the property by EAPP for aquifer protection, in addition to the more restrictive requirements for HCP management and monitoring